



MONTHLY MEMBERSHIP PROGRESS REPORT

District A 5

Results as of: 3/31/2017

GMT: CHRIS LEWIS

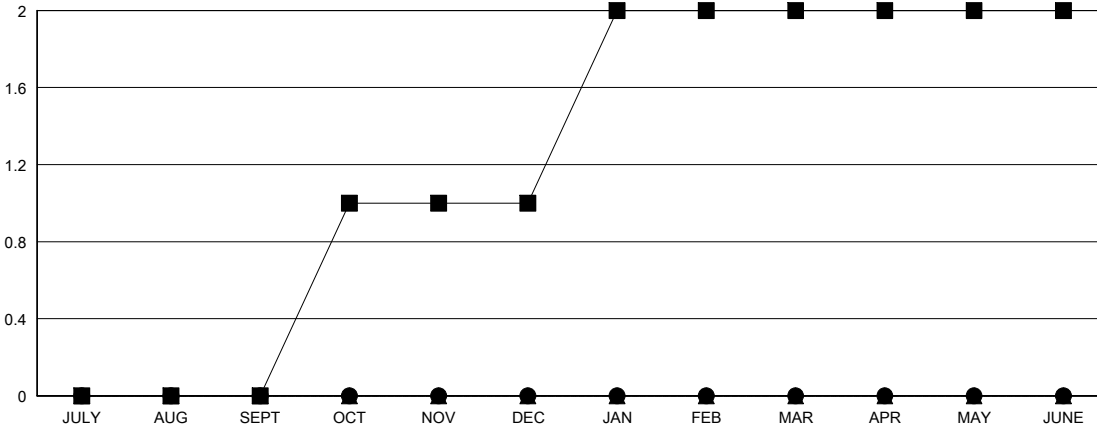
LOCATION ONTARIO

GMT CA

Clubs			
RESULTS FOR 2016-2017			
QUARTER	NEW CLUB GOAL	NEW CLUBS	DROPPED CLUBS
JULY/AUG/SEPT	0	0	0
OCT/NOV/DEC	1	0	0
JAN/FEB/MAR	1	0	0
APR/MAY/JUNE	0	0	0

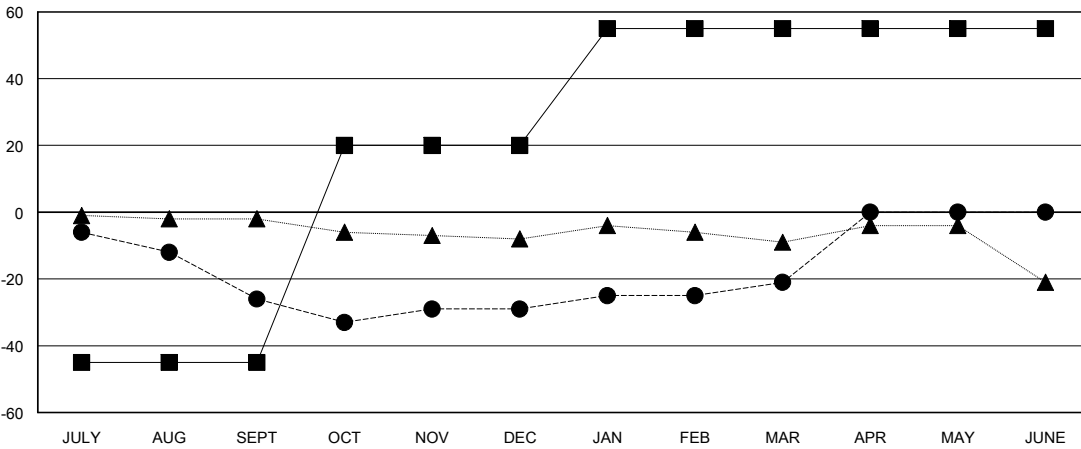
Members			
RESULTS FOR 2016-2017			
QUARTER	NEW MEMBER GROWTH NET GOAL (not reinstated or transfers)	NEW MEMBER GROWTH ACTUAL (not reinstated or transfers)	DROPPED MEMBERS ACTUAL (including transfers)
JULY/AUG/SEPT	-45	10	36
OCT/NOV/DEC	65	29	32
JAN/FEB/MAR	35	31	23
APR/MAY/JUNE	0	0	0

GOALS AND ACTUAL NEW CLUBS CUMULATIVE



- - CURRENT YEAR GOALS FOR NEW CLUBS
- - CURRENT YEAR ACTUAL NEW CLUBS
- ▲ - LAST YEAR ACTUAL NEW CLUBS

GOALS AND ACTUAL MEMBERS CUMULATIVE



- - NEW MEMBER GROWTH NET GOAL
- - NEW MEMBER GROWTH ACTUAL
- ▲ - LAST YEAR MEMBERSHIP ACTUAL

DROPPED CLUBS: 0	27 CLUBS OF 53 ADDED 1 OR MORE NEW MEMBERS	<u>GENDER DISTRIBUTION</u>	
DROPPED MEMBERS		MALE	748 (60.13%)
DECEASED	10	FEMALE	496 (39.87%)
CLUB CANCELLED	0	TOTAL FAMILY UNIT MEMBERS	233
OTHER	81	FAMILY MEMBERS PAYING HALF DUES	117
TOTAL	91		

[CLICK HERE FOR CUMULATIVE MEMBERSHIP DATA](#)